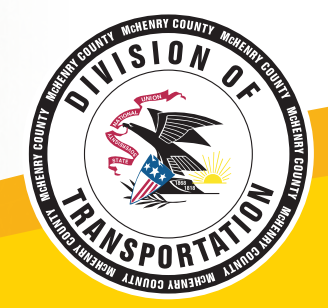




CHARLES ROAD

SAFETY IMPROVEMENTS

COMMUNITY ADVISORY GROUP
MEETING #1



November 14, 2023

Meeting Agenda

Introductions

Study Process

CAG Meeting Goals and Rules

Project Overview

Issues and Concerns

Problem Statement

Intersection Alternatives

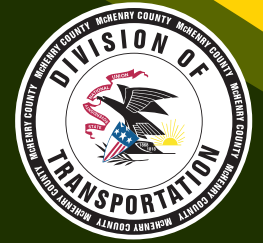
Next Steps



Welcome and Introductions



CHARLES ROAD
SAFETY IMPROVEMENTS



Project Team



REBECCA BRAZAS

Project Manager

JOYCE DELONG

Design Manager

SAMANTHA DITTRICH

Design Engineer IV

SCOTT HENNINGS

Assistant Director of Transportation

Kimley»»Horn

SAGAR SONAR

Project Manager

MICHAEL KOKEN

Project Engineer

SETH ATKINS

Design Engineer

CAG Introductions

PLEASE INTRODUCE YOURSELF

State your name, affiliation,
and interest in the project.



Study Process



CHARLES ROAD
SAFETY IMPROVEMENTS



Project Development Process

WE ARE
HERE

PHASE I



18-24 months

Preliminary
Engineering &
Environmental Studies

PHASE II



18-24 months

Contract Plan
Preparation
& Land Acquisition

PHASE III



18-24 months

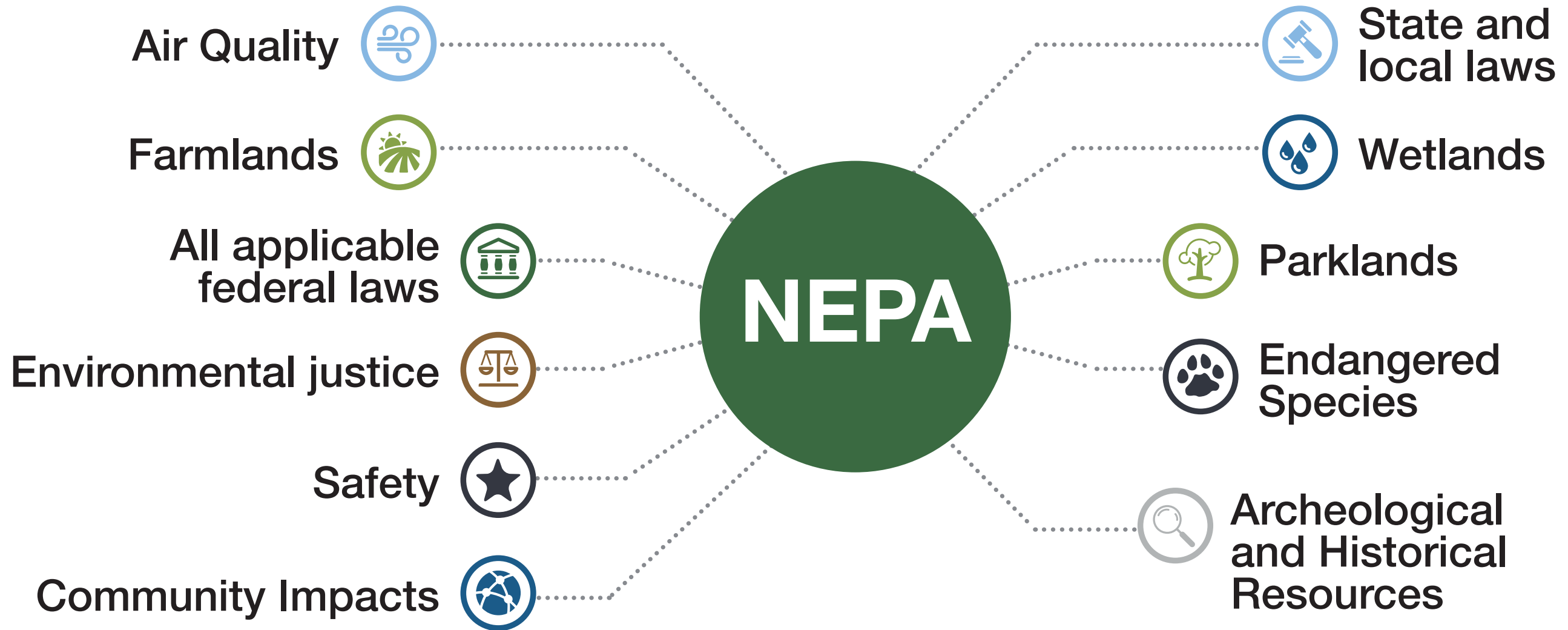
Project
Construction

National Environmental Policy Act (NEPA) of 1969

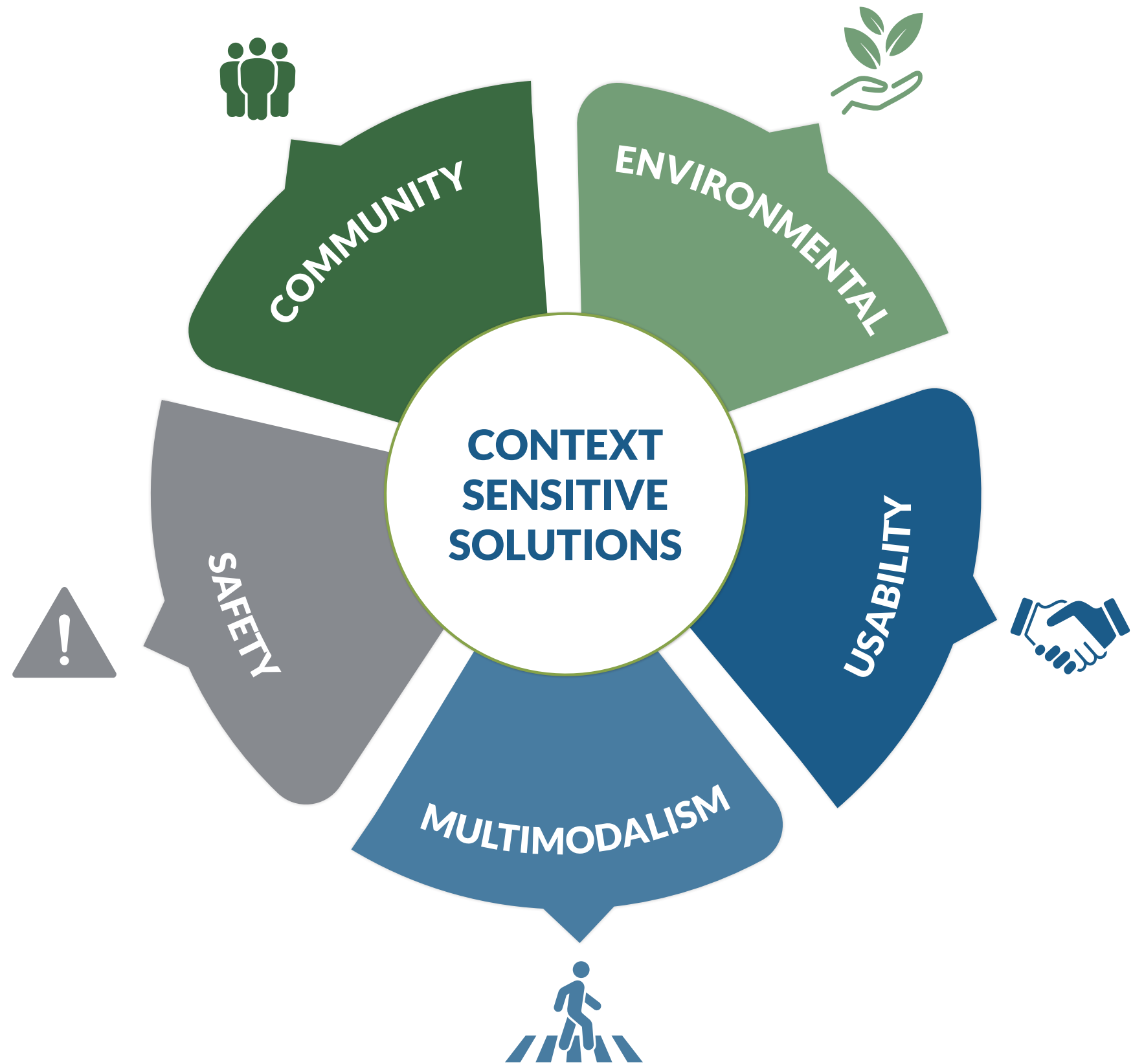
Federal law that outlines policies to protect the environment

Must consider the effects on the quality of human environment

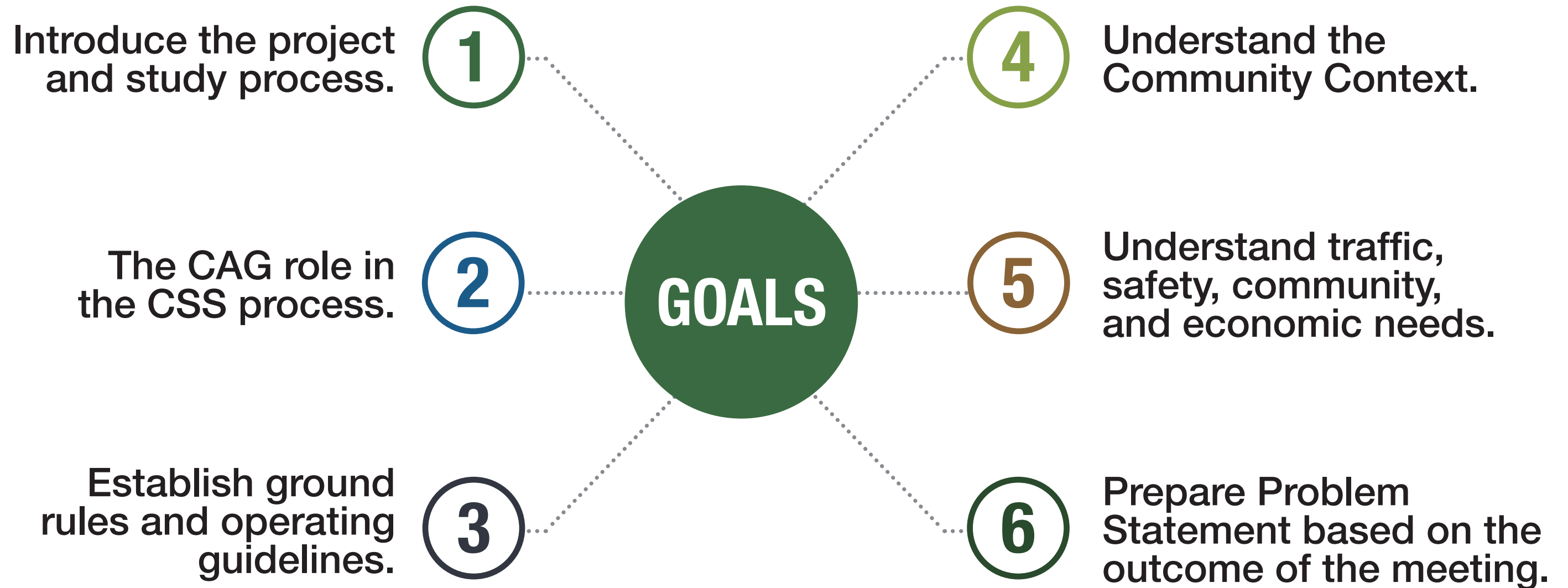
The Charles Rd study will adhere to NEPA



Context Sensitive Solutions (CSS)



CAG Meeting Goals



CAG Ground Rules

1

Participants should express their ideas, feelings, and concerns so that the group can consider them during the study.

2

Input from all participants is valued and considered.

3

All participants in the process must treat each other with respect and dignity.

4

MCDOT will serve as the lead agency and will make final project decisions based on Federal Highway Administration guidelines.

5

Meetings will be documented, and meeting summaries will be made available to the public.

6

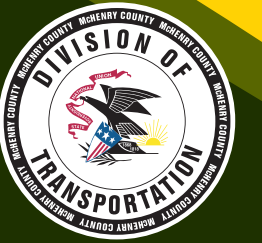
The project must progress at a reasonable pace, based on the project schedule.



Project Overview

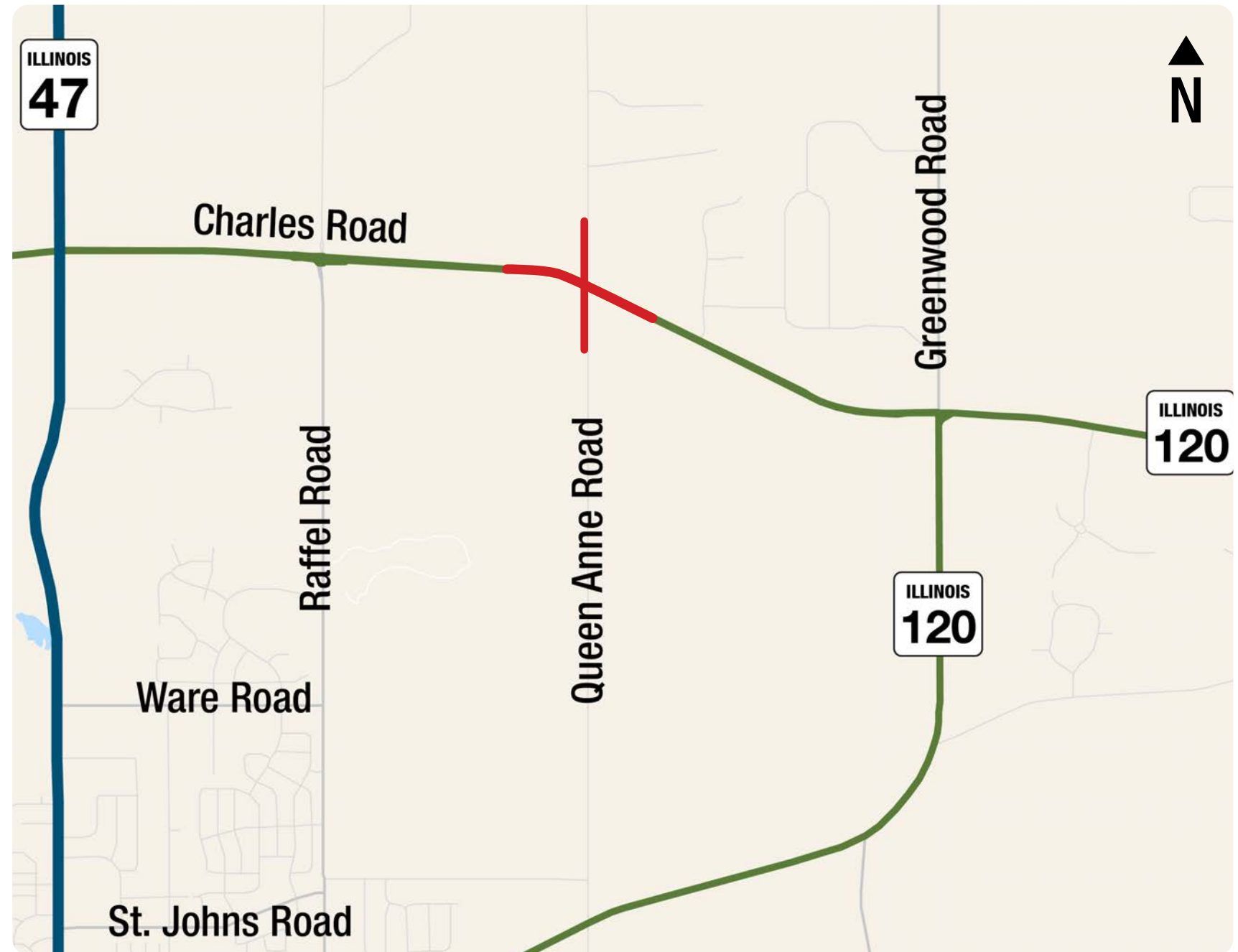


CHARLES ROAD
SAFETY IMPROVEMENTS

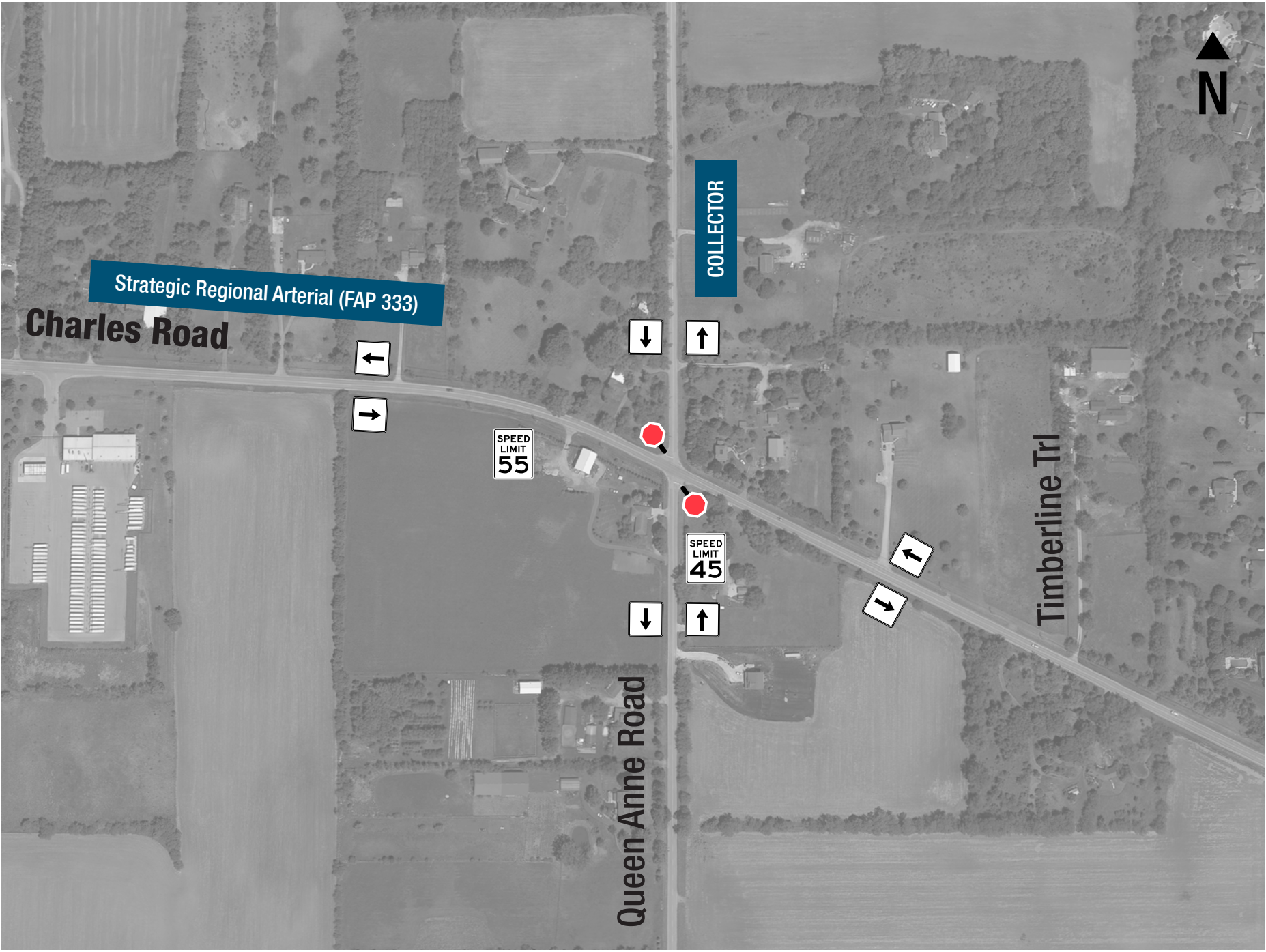


Study Location

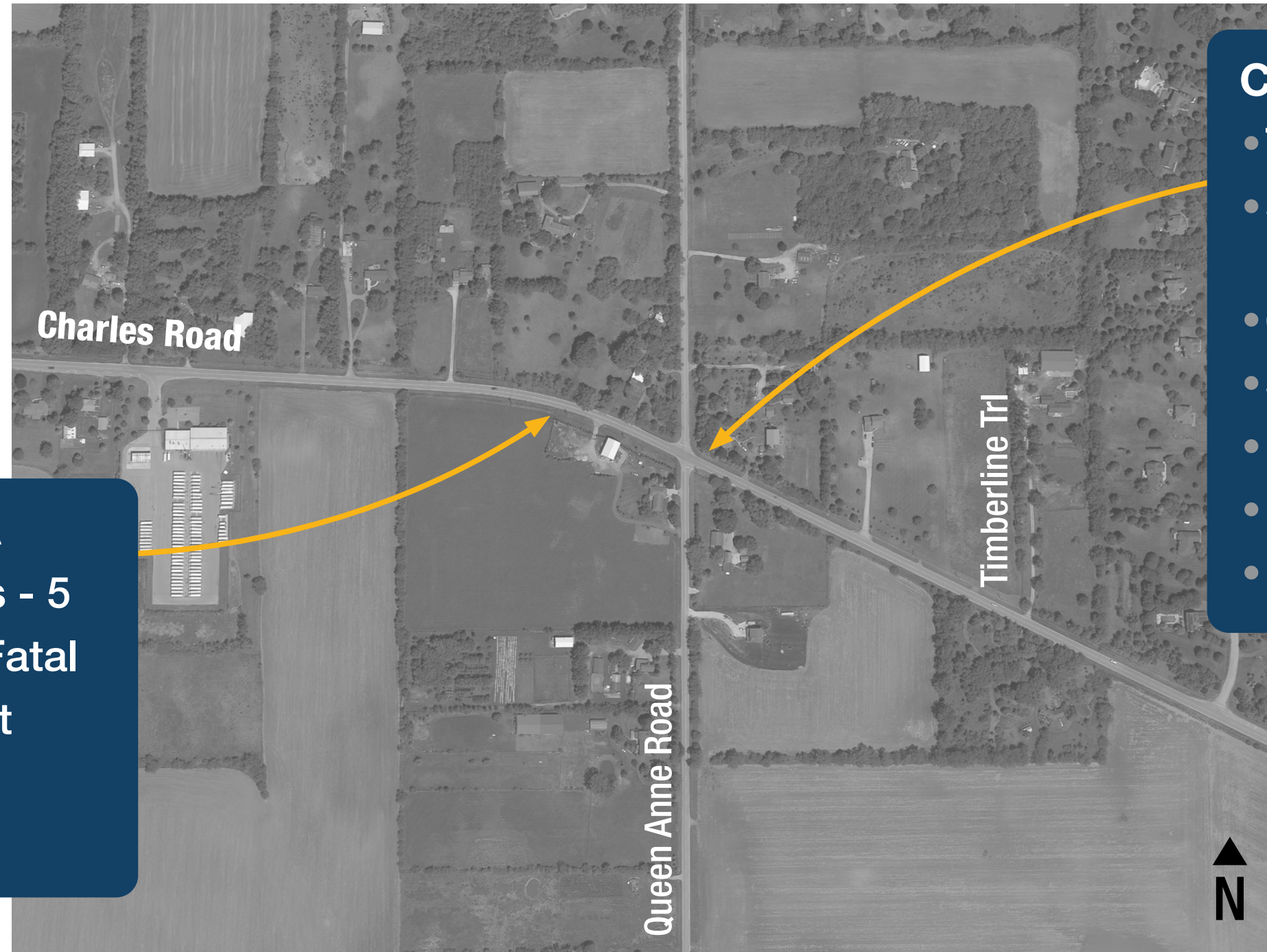
The study is located at Charles Road and Queen Anne Road in McHenry County.



Intersection Characteristics



Crash Analysis: 2016-2020



CRASH DATA

- Total crashes - 12
- Severity: 2 A, 4 B, 1 C, 5 O
- 6 angle
- 3 rear-end
- 1 left-turn
- 1 overturned
- 1 fixed object

CRASH DATA

- Total crashes - 5
- Severity - 1 Fatal
- 3 fixed object
- 1 overturned
- 1 Rear end

Safety Tier Assessment



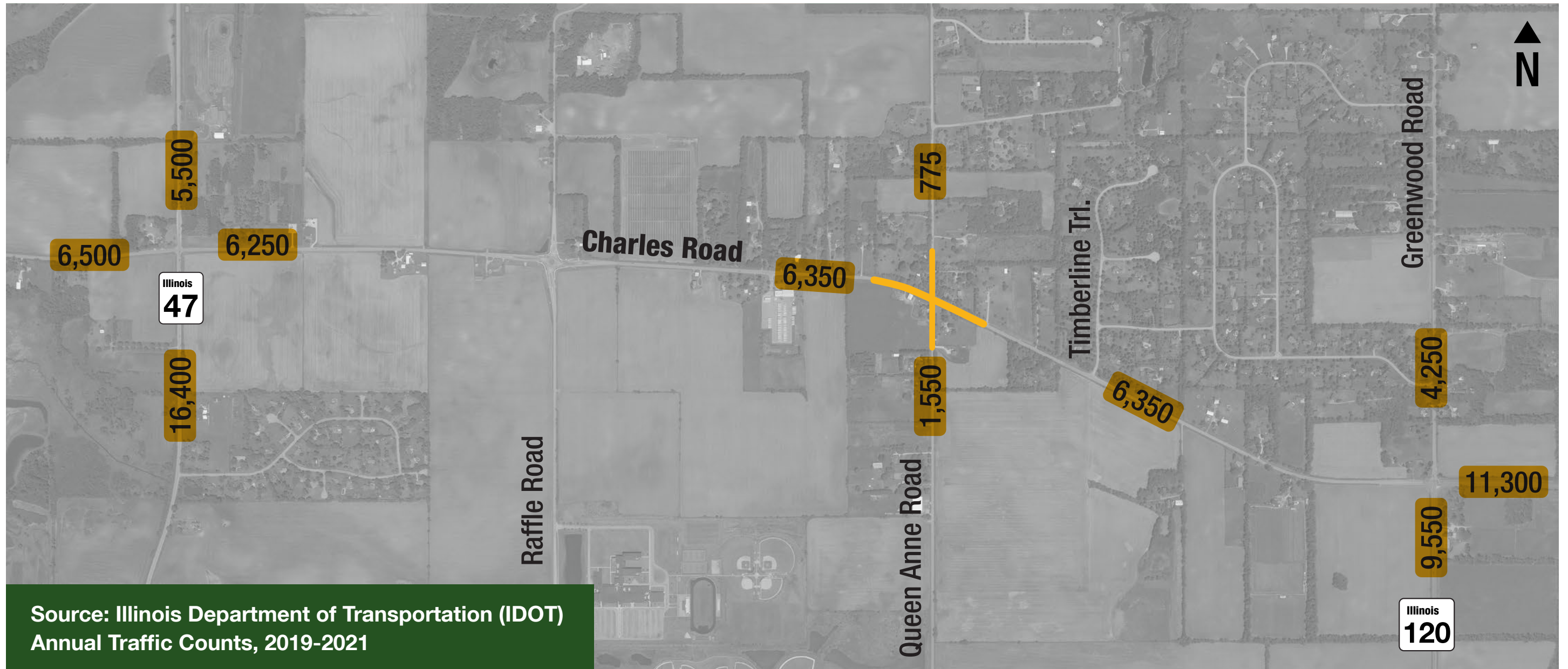
CHARLES ROAD AND QUEEN ANNE ROAD

- Safety Tier - High (2022)
- Safety Tier - Critical (2017)

SAFETY TIERS

- HIGH
- MEDIUM
- LOW

Traffic Volumes





Issues and Concerns



CHARLES ROAD
SAFETY IMPROVEMENTS



Identify Issues and Concerns



WHAT ISSUES DO YOU HAVE?

WHAT SAFETY CONCERNS DO YOU EXPERIENCE AT THE INTERSECTION?

DO YOU EXPERIENCE DELAY AT THE INTERSECTION?

Problem Statement



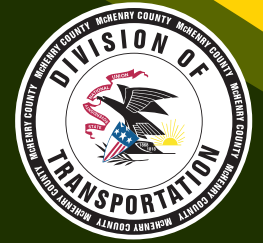
The problems at the intersection to be solved by the project are...



Intersection Alternatives



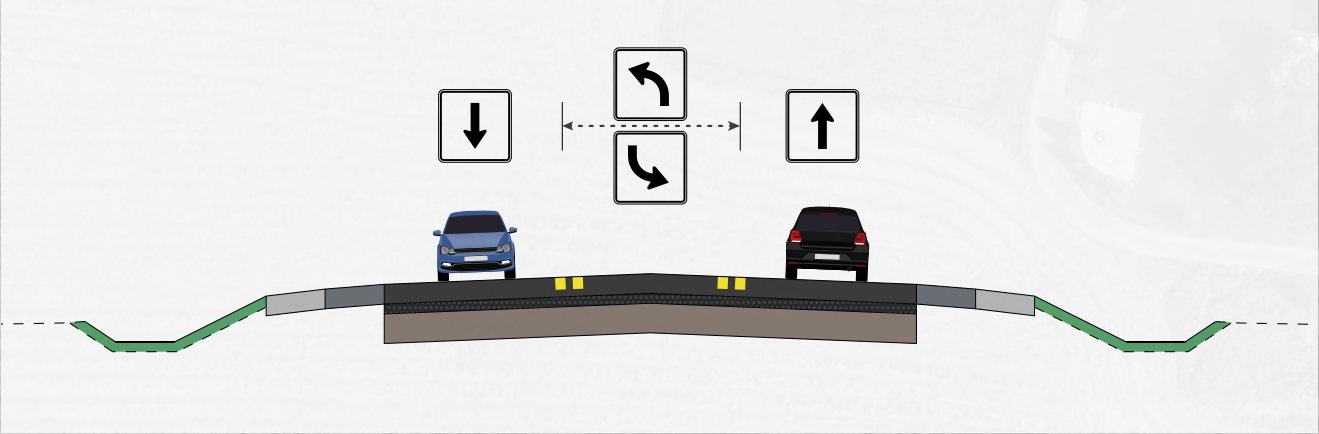
CHARLES ROAD
SAFETY IMPROVEMENTS



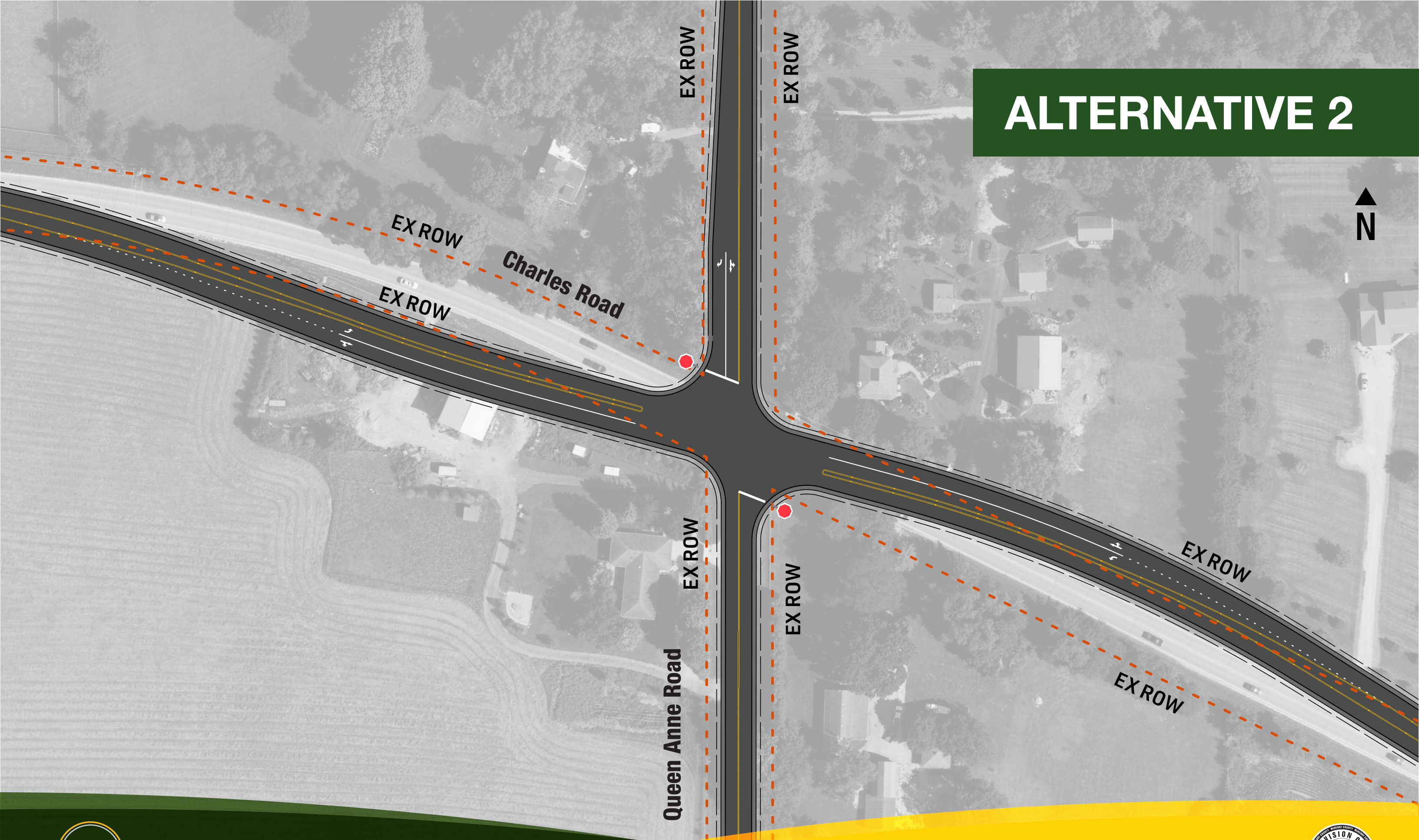
ALTERNATIVE 1



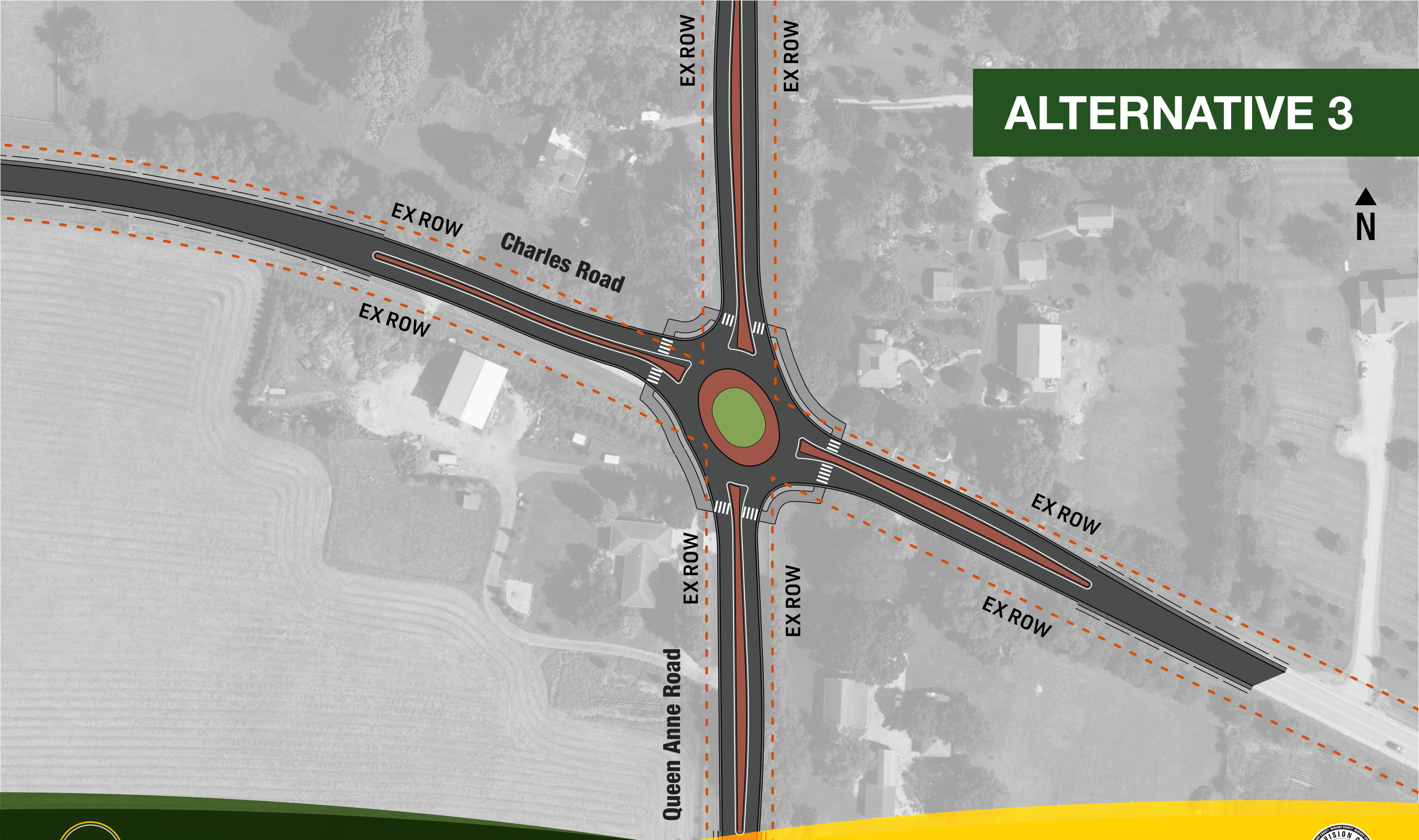
Typical Section



ALTERNATIVE 2

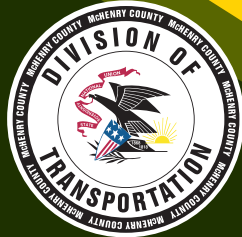


ALTERNATIVE 3

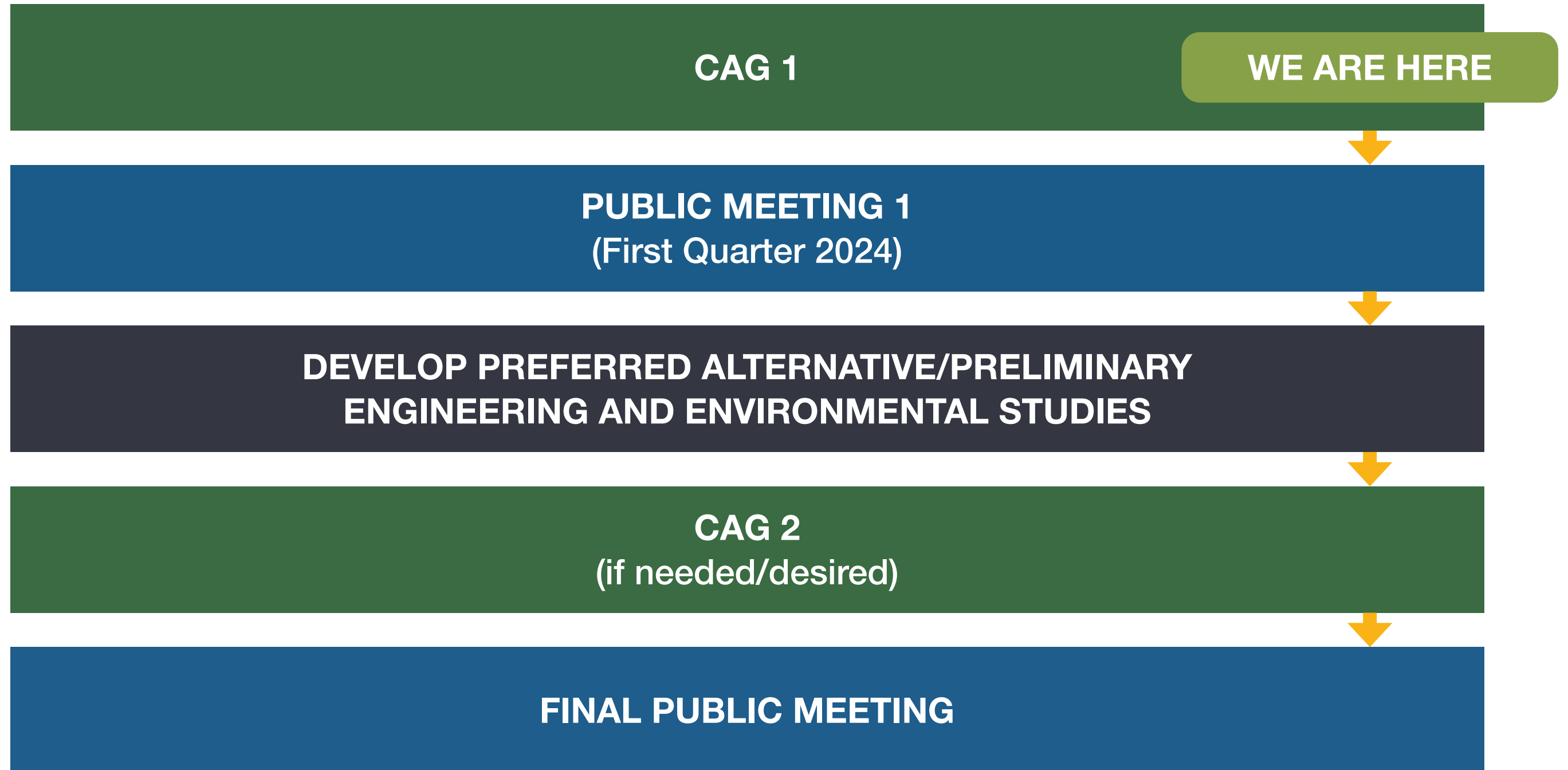




Next Steps



Next Steps





Questions?



CHARLES ROAD
SAFETY IMPROVEMENTS

